

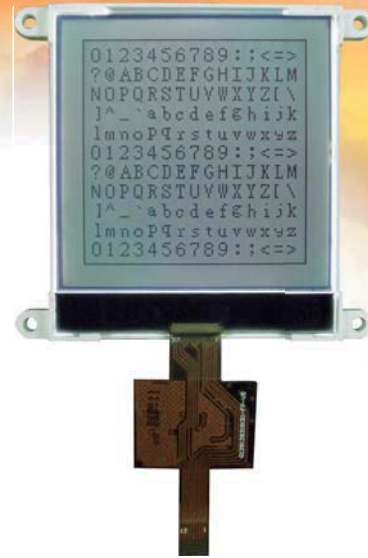
BO128128B

Feature

1. COG package
2. Built-in controller ST7541i
3. +3.3V single power supply
4. 1/128 duty cycle
5. I2C Interface

Mechanical Data

Item	Standard Value	Unit
Module Dimension	56.0 x 64.0	mm
Viewing Area	50.0 x 50.0	mm
Dot Size	0.32 x 0.32	mm
Dot Pitch	0.35 x 0.35	mm



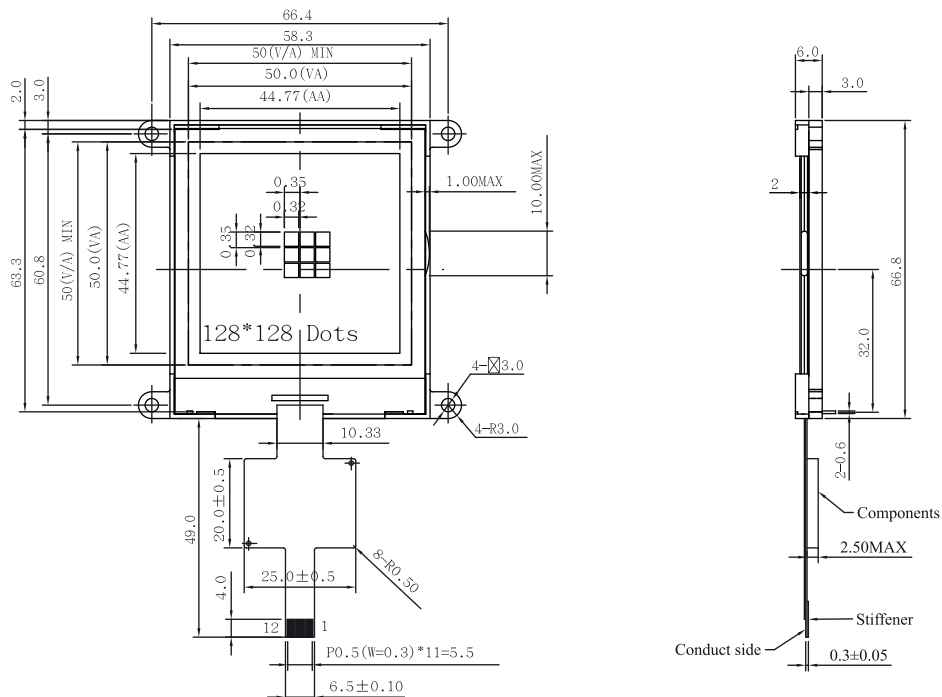
Pin Assignment

Pin	Symbol	Level	Function
1	V0	-	LCD driver voltage
2	V1	-	
3	V2	-	
4	V3	-	
5	V4	-	
6	VOOUT	-	DC-DC voltage converter
7	VSS	-	Ground
8	VDD	3.0V	Power supply (+3.3V)
9	SCL	H/L	I2C Serial Clock Input
10	SDA	H/L	I2C Serial Data Input
11	/RESET	L	Reset : L=Enable H=Disable
12	NC	-	NC

Electronic Characteristics

Item	Symbol	Condition	Typical Value	Unit
Input Voltage	V _{dd}	V _{dd} = +3.3V	3.3	V
Supply Current	I _{dd}	V _{dd} = +3.3V	5.0	mA
LCD Driving Voltage	V _{LCD}	25°C	14.0	V

Dimension



BO-5