

# BO12864E

## Feature

1. COG package
2. Built-in controller ST7565
3. 1/64 duty cycle
4. +3.3V single power supply
5. On chip LCD booster
6. Option: LED Edge

## Mechanical Data

Item	Standard Value	Unit
Module Dimension	80.0 x 54.0	mm
Viewing Area	70.7 x 38.8	mm
Dot Size	0.48 x 0.48	mm
Dot Pitch	0.52 x 0.52	mm



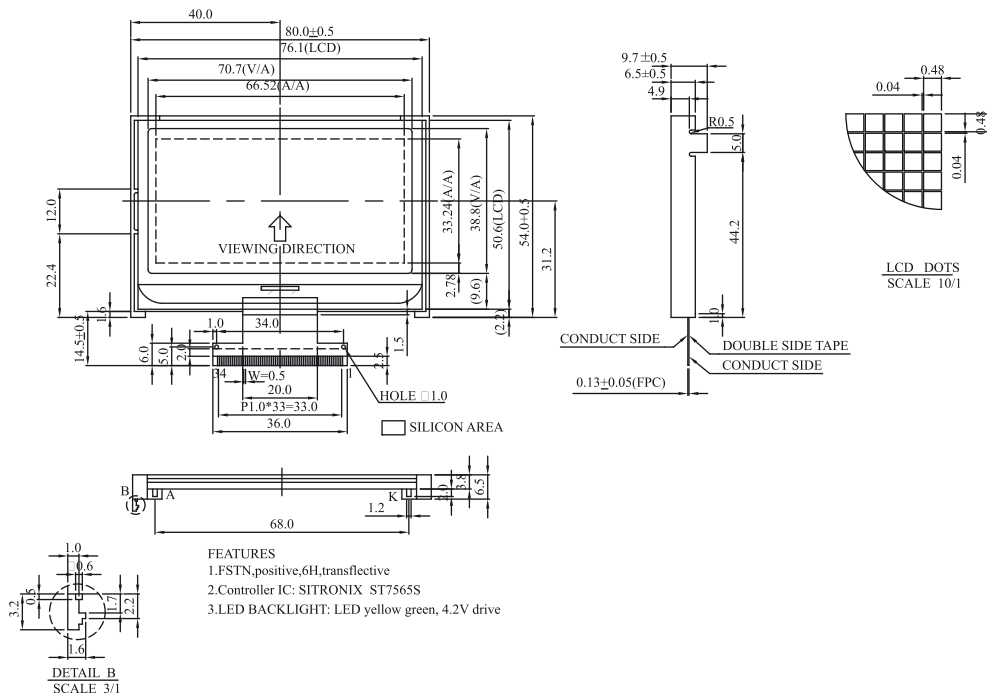
## Pin Assignment

Pin	Symbol	Pin	Symbol	Pin	Symbol
1	/CS1	18	CAP3-	32	P/S
2	/RES	19	CAP1+	33	HPM
3	A0	20	CAP1-	34	IRS
4	WR(RW)	21	CAP2-		
5	RE(E)	22	CAP2+		
6~13	D0~D7	23	CAP4-		
14	VDD	24	VRS		
15	VSS	25~29	V1~V5		
16	Vout	30	VR		
17	CAP5-	31	C86		

## Electronic Characteristics

Item	Symbol	Condition	Typical Value	Unit
Input Voltage	Vdd	Vdd = +3.3V	3.3	V
Supply Current	Idd	Vdd = +3.3V	0.5	mA
LCD Driving Voltage	Vdd-V5	25°C	9.0	V

## Dimension



BO-11