

6LR61AD POWERLINE

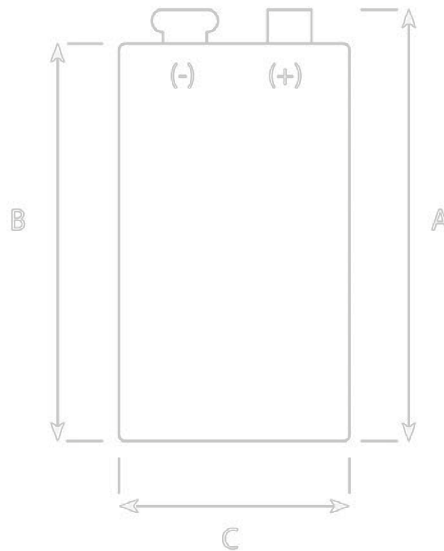
IEC DIMENSIONS (MM)

— CONSULTING DISTRIBUTOR —



POHL

POHL Electronic GmbH  
 Eduard-Maurer-Straße 11a • 16761 Hennigsdorf  
 Tel. +49 3302 81893-0 • Fax +49 3302 81893-99  
 www.pohl-electronic.de • info@pohl-electronic.de



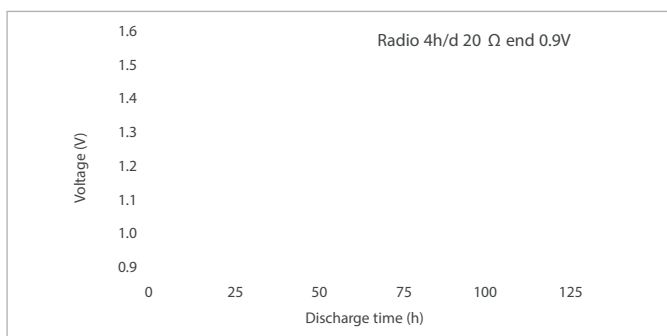
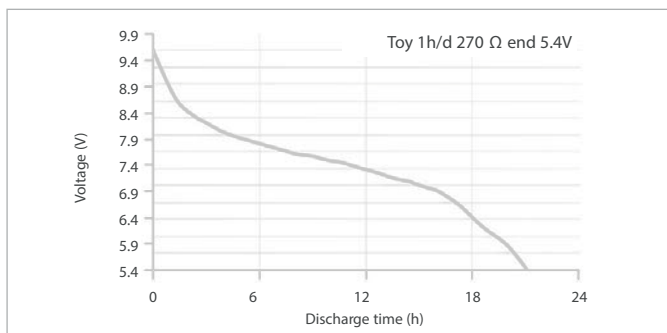
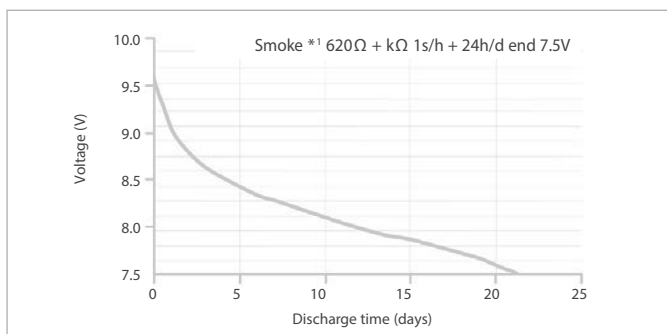
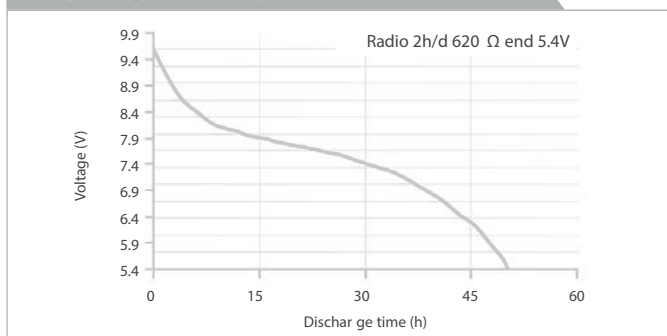
| Dimensions | max. (mm) | min. (mm) |
|------------|-----------|-----------|
| A          | 48.5      | 46.5      |
| B          | 46.4      |           |
| C          | 26.5      | 24.5      |
| D          | 17.5      | 15.5      |
| E          | 12.95     | 12.45     |

SPECIFICATIONS

|                             |  |
|-----------------------------|--|
| Name                        | 9V / 6LR61 / 6AM6 / MN1604 / 1604A / 1604AC  |
| Made in                     | Belgium  |
| Type                        | Alkaline foil  |
| Nominal voltage             | 9V   |
| Electrolyte                 | Potassium Hydroxide  |
| Average weight              | 44.3g  |
| Storage temperature range   | +10°C ~ +25°C  |
| Operating temperature range | -20°C ~ +45°C  |
| Average impedance           | approx. 2.3 Ω @ 1kHz AC  |
| Heavy metals                | No added mercury (Hg), Cadmium (Cd) or Lead (Pb)   |
| Compliant with              | IEC 60086<br>non dangerous goods regulation<br>Nordic Ecolabel (White Swan) version 3.7<br>EC directive 91/157EC, 98/101EC, 2006/66/EC |
| Recommended cut-off voltage | 4.8V per battery   |

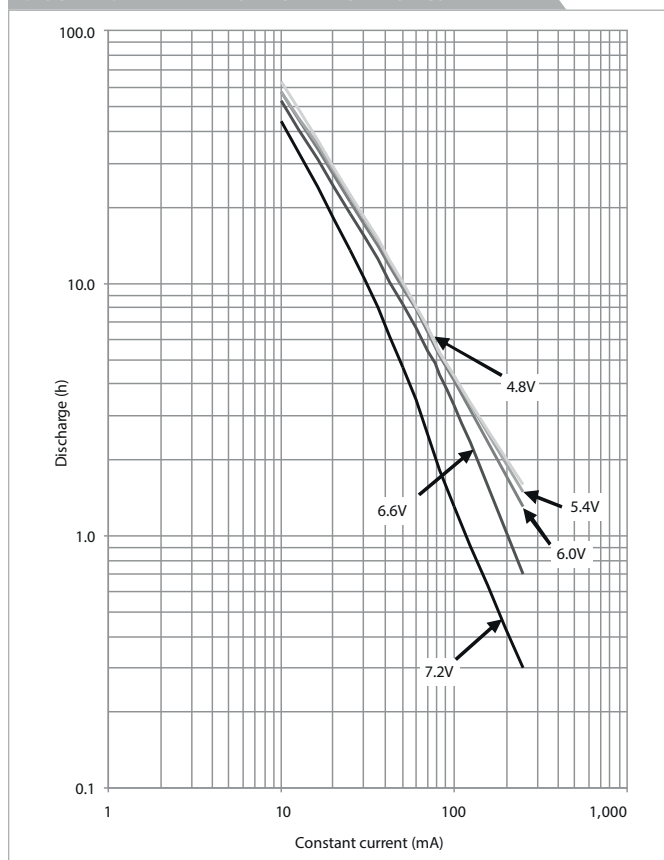
6LR61AD POWERLINE

TYPICAL DISCHARGE VALUES



\*1 Smoke detector.

DISCHARGE TEMPERATURE CHARACTERISTICS



CONSULTING DISTRIBUTOR

**POHL** Electronic GmbH

Eduard-Mauren-Straße 11a • 16761 Hennigsdorf  
 Tel. +49 3302 81893-0 • Fax +49 3302 81893-99  
 www.pohl-electronic.de • info@pohl-electronic.de