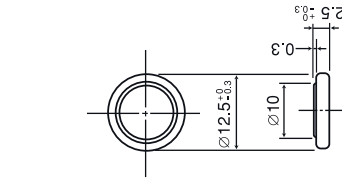


## BR-1225A

## BR-1632A

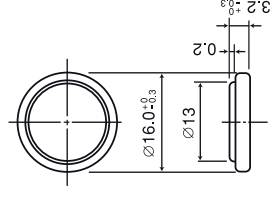
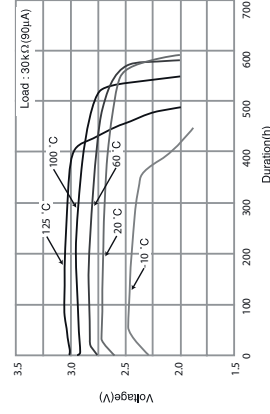
## BR-2330A

## BR-2450A



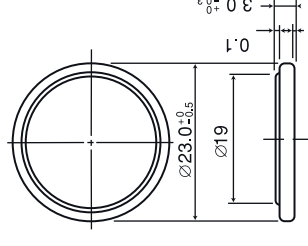
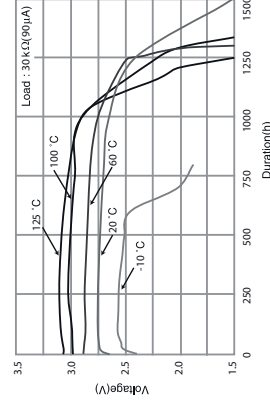
SPECIFICATIONS	
Name	BR-1225A
Nominal voltage (V)	3
Nominal capacity (mAh)	48
Continuous drain (mA)	0.03
Operating temperature (°C)	-40 to +125
Weight (g)	0.8

## DISCHARGE TEMPERATURE CHARACTERISTICS



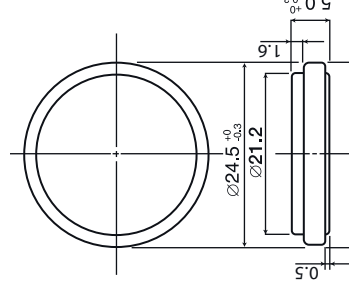
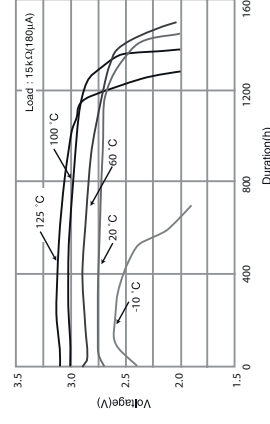
SPECIFICATIONS	
Name	BR-1632A
Nominal voltage (V)	3
Nominal capacity (mAh)	120
Continuous drain (mA)	0.03
Operating temperature (°C)	-40 to +125
Weight (g)	1.5

## DISCHARGE TEMPERATURE CHARACTERISTICS



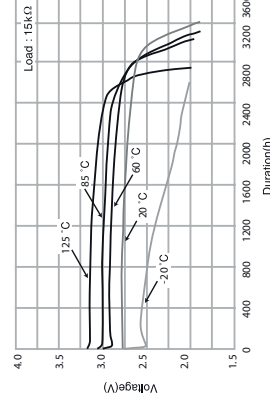
SPECIFICATIONS	
Name	BR-2330A
Nominal voltage (V)	3
Nominal capacity (mAh)	255
Continuous drain (mA)	0.03
Operating temperature (°C)	-40 to +125
Weight (g)	3.2

## DISCHARGE TEMPERATURE CHARACTERISTICS



SPECIFICATIONS	
Name	BR-2450A
Nominal voltage (V)	3
Nominal capacity (mAh)	550
Continuous drain (mA)	0.03
Operating temperature (°C)	-40 to +125
Weight (g)	5.9

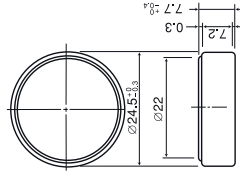
## DISCHARGE TEMPERATURE CHARACTERISTICS



CONSULTING DISTRIBUTOR


**POHL**
**POHL Electronic GmbH**  
 Eduard-Mauer-Str. 11a • 16761 Hennigsdorf  
 Tel. +49 3302 81895-0 • Fax +49 3302 81893-99  
 www.pohl-electronic.de • info@pohl-electronic.de

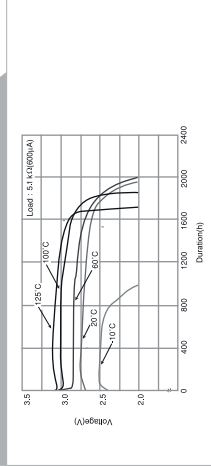
## BR-2477A



## SPECIFICATIONS

Name	BR-2477A
Nominal voltage (V)	3
Nominal capacity (mAh)	1,000
Continuous drain (mA)	0.03
Operating temperature (°C)	-40 to +125
Weight (g)	8.0

## DISCHARGE TEMPERATURE CHARACTERISTICS



CONSULTING DISTRIBUTOR



POHL Electronic GmbH  
 Eduard-Maarek-Strasse 11a · 16761 Hennigsdorf  
 Tel. +49 3302 81893-0 · Fax +49 3302 81893-99  
 www.pohl-electronic.de · info@pohl-electronic.de