



INDIVIDUAL DATA SHEETS

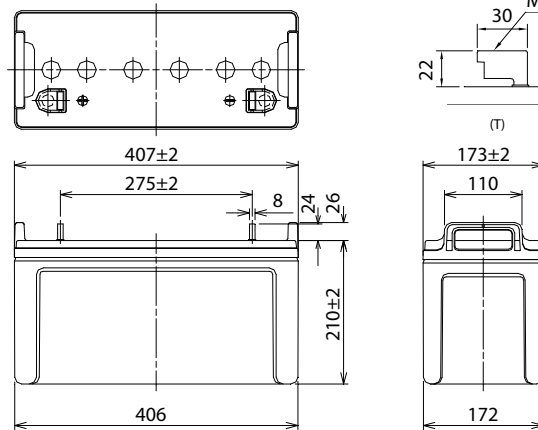
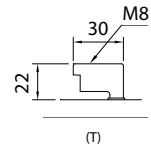
LC-QA12110TP

FOR STANDBY POWER SUPPLIES.
 EXPECTED TRICKLE DESIGN LIFE: 15 YEARS AT 20°C.

DIMENSIONS (MM)



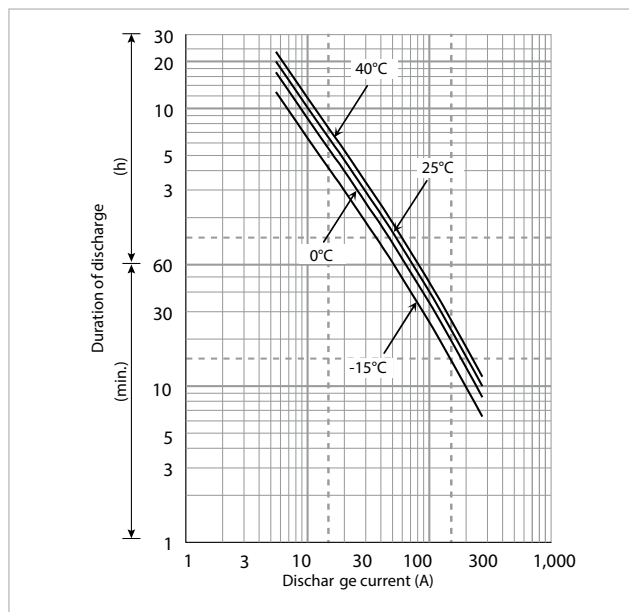
Terminal type



Contents indicated (including the recycle marking, etc.) are subject to change without notice. Battery case resin: flame-retardant (UL94 V-0)

Specifications		LC-QA12110TP
Nominal voltage (V)		12
Nominal capacity	20 hours rate (Ah)	110
Dimensions	Length (mm)	173
	Width (mm)	407
	Total height (mm)	236
Approx. mass (kg)		36.0
Terminal type		M8 T-shape
Capacity (25°C)	20 hours rate (Ah)	110
	10 hours rate (Ah)	101
	3 hours rate (Ah)	86
	1 hour rate (Ah)	75
Impedance (mΩ)	Fully charged battery (25°C)	4
	Temperature dependency of capacity (%) – 20 hours rate	
	40°C	102
	25°C	100
	0°C	85
	-15°C	65
Remaining capacity (25°C)	After 3 months (%)	91
	After 6 months (%)	82
	After 12 months (%)	64

DURATION OF DISCHARGE VS. DISCHARGE CURRENT



WATT TABLE (25°C)

(Wattage/battery)

Cut-off	10min.	15min.	20min.	30min.	45min.	1h	1.5h	2h	3h	4h	5h	6h	10h	20h
9.6V	2,987	2,270	1,872	1,391	1,017	793	578	482	353	279	232	197	124	63.7
9.9V	2,920	2,215	1,827	1,358	995	772	563	469	346	273	225	192	120	63.2
10.2V	2,855	2,136	1,761	1,314	984	751	548	463	340	267	218	186	118	62.7
10.5V	2,764	2,110	1,748	1,303	968	730	532	453	334	264	215	185	117	62.1
10.8V	2,522	2,010	1,739	1,261	933	720	525	442	328	258	212	183	116	61.6

AMPERE TABLE (25°C)

(Ampere/battery)

Cut-off	10min.	15min.	20min.	30min.	45min.	1h	1.5h	2h	3h	4h	5h	6h	10h	20h
9.6V	272	212	175	133	96.7	76.7	53.6	43.2	30.2	23.3	19.7	16.1	10.4	5.50
9.9V	269	211	174	132	94.0	76.4	52.6	42.8	29.6	23.1	19.4	16.0	10.3	5.50
10.2V	268	210	172	130	93.5	75.9	52.1	42.3	29.4	22.9	19.1	15.9	10.2	5.50
10.5V	245	198	164	128	92.5	75.4	51.5	41.8	28.8	22.6	19.0	15.7	10.1	5.50
10.8V	232	192	160	126	79.9	65.4	46.4	39.7	28.1	22.3	18.9	15.5	10.0	5.39

All mentioned values are average values



LC-QA12110TP

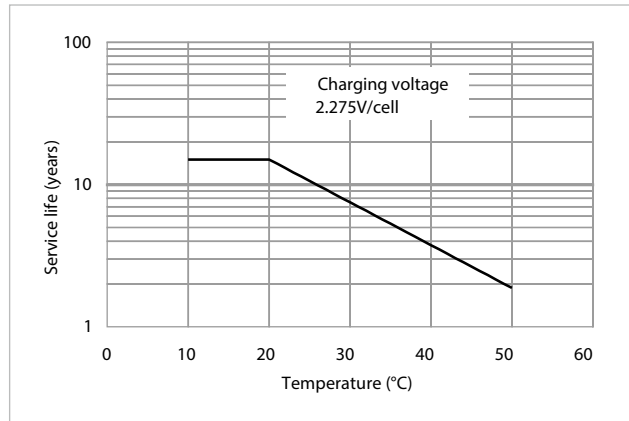
CHARGING METHOD (25°C)

Cycle use	Control voltage: 13.6V - 13.8V Initial current: 16.5A or smaller
-----------	---

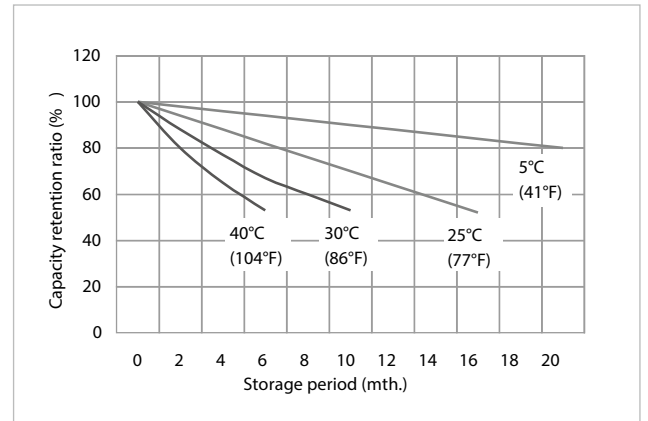
CUT-OFF VOLTAGE

Discharge current	5.50A - 22.0A	22.0A - 55.0A	55.0A - 110A	110A - 220A	220A - 330A
Cut-off voltage	10.5V	10.2V	9.9V	9.3V	8.7V

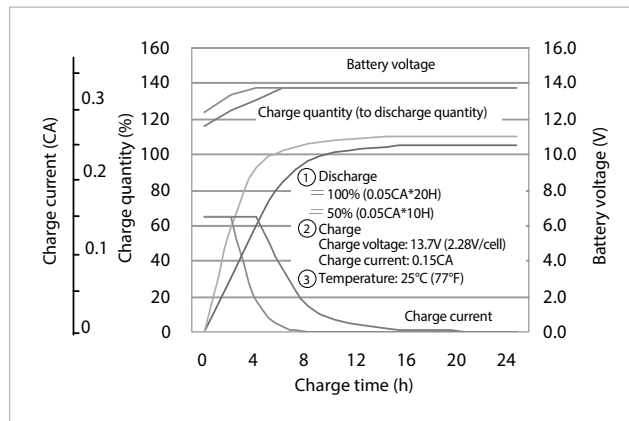
INFLUENCE OF TEMPERATURE ON TRICKLE LIFE



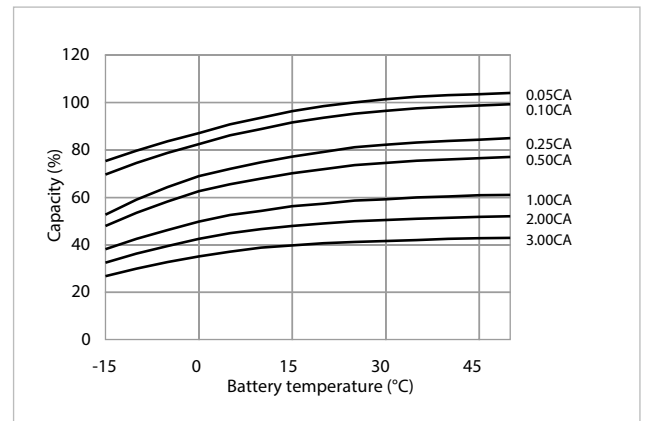
RESIDUAL CAPACITY TEST RESULT



CONSTANT-VOLTAGE CONSTANT-CURRENT CHARGE CHARACTERISTICS FOR TRICKLE USE



DISCHARGE CAPACITY BY TEMPERATURE AND BY DISCHARGE CURRENT



DISCHARGE CHARACTERISTICS

